

High Pressure LPG + Air Mixer

(MODEL : JHM)



--- CONTENTS ---

1. Characteristics and Structure
2. Composition of Device and Control Board
3. Typical System Configuration(P&ID)
4. Drawings, Dimensions
5. Specifications

1. Characteristics and Structure

1) Characteristics of LPG + AIR MIXER

- Simple operation and elegant appearance
- Possible to control the supply pressure. (0.05MPa – 0.5MPa)
- Possible to control the supply heating quantity. (5000 – 23000kcal/Nm³).
- Rate control method through the flux control (Rate control method).
- Possible to make the remote control through separate composition of the control board

2) Structure of LPG + AIR MIXER

As the device, which if some specific pressure of LP gas and air are supplied, the heating quantity is supplied to the place to be used as the air quantity is supplied in the rate fixed in the rate controller as per the flux of LP gas, and its strong point is that it is easy to select the heating quantity, pressure and flux, and this product corrects the temperature and pressure of the used flux, which is equipped with the rate controller for program that can be operated manually and automatically and that can operate the heating freely, and also it can be automatically interrupted and resumed as per the setting pressure by installing the pressure transmitter in the surge tank.

2. Composition of Device and Control Board

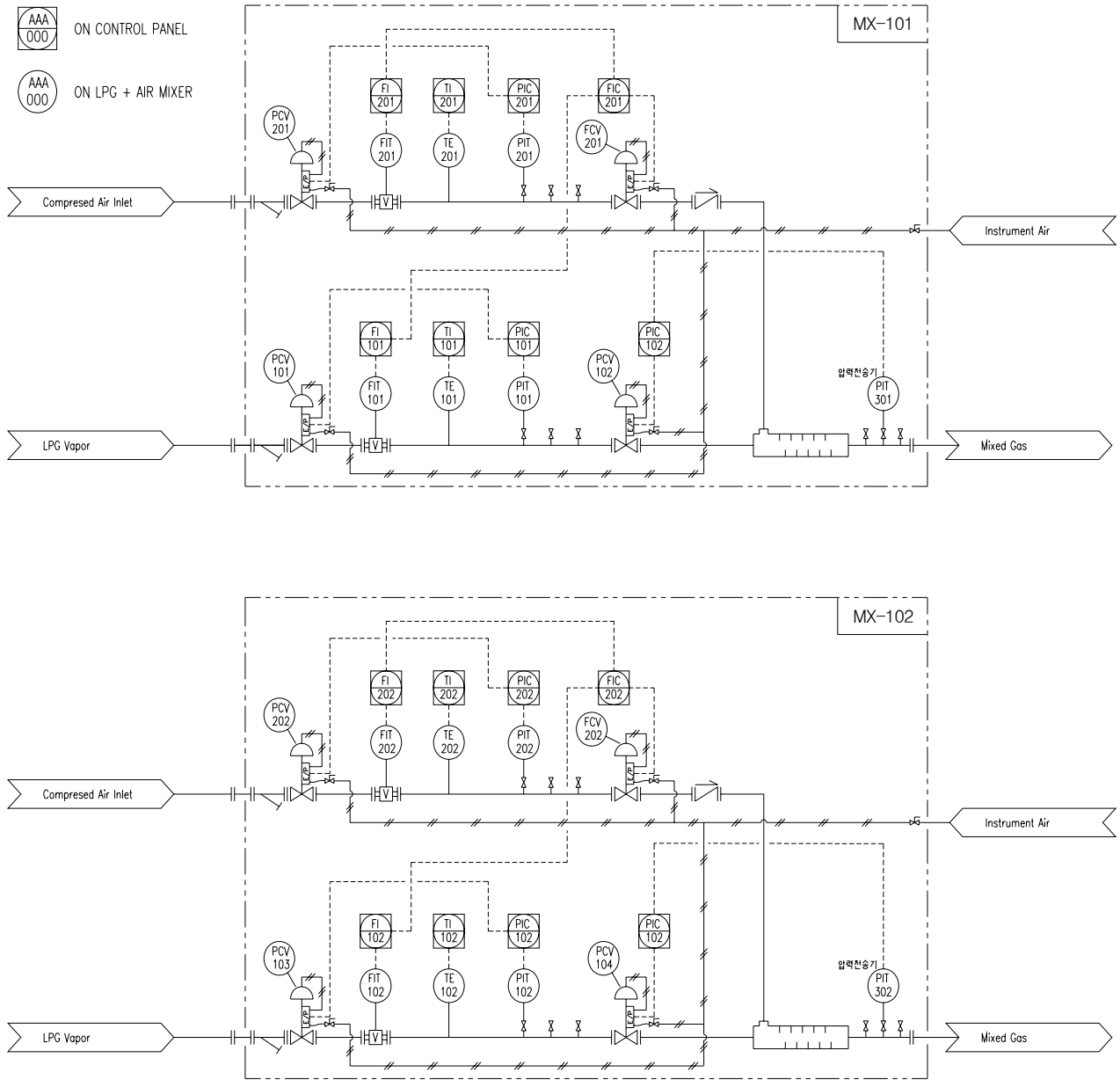
1) Composition of Device

Equipment Name	Maker	Remark
Pressure Control Valve for LPG Vapor	C.C.I	KOREA
Pressure Control Valve for Compressed Air	C.C.I	KOREA
Flow Transmitter for LPG Vapor	YOKOGAWA	JAPAN
Flow Transmitter for Compressed Air	YOKOGAWA	JAPAN
Flow Control Valve for LPG Vapor	C.C.I	KOREA
Flow Control Valve for Compressed Air	C.C.I	KOREA
Pressure Transmitter for LPG Vapor	YOKOGAWA	JAPAN
Pressure Transmitter for Compressed Air	YOKOGAWA	JAPAN
Temperature Transmitter for LPG Vapor	WOOJIN	KOREA
Temperature Transmitter for Compressed Air	WOOJIN	KOREA
Pressure Transmitter for Mixed Gas	YOKOGAWA	JAPAN

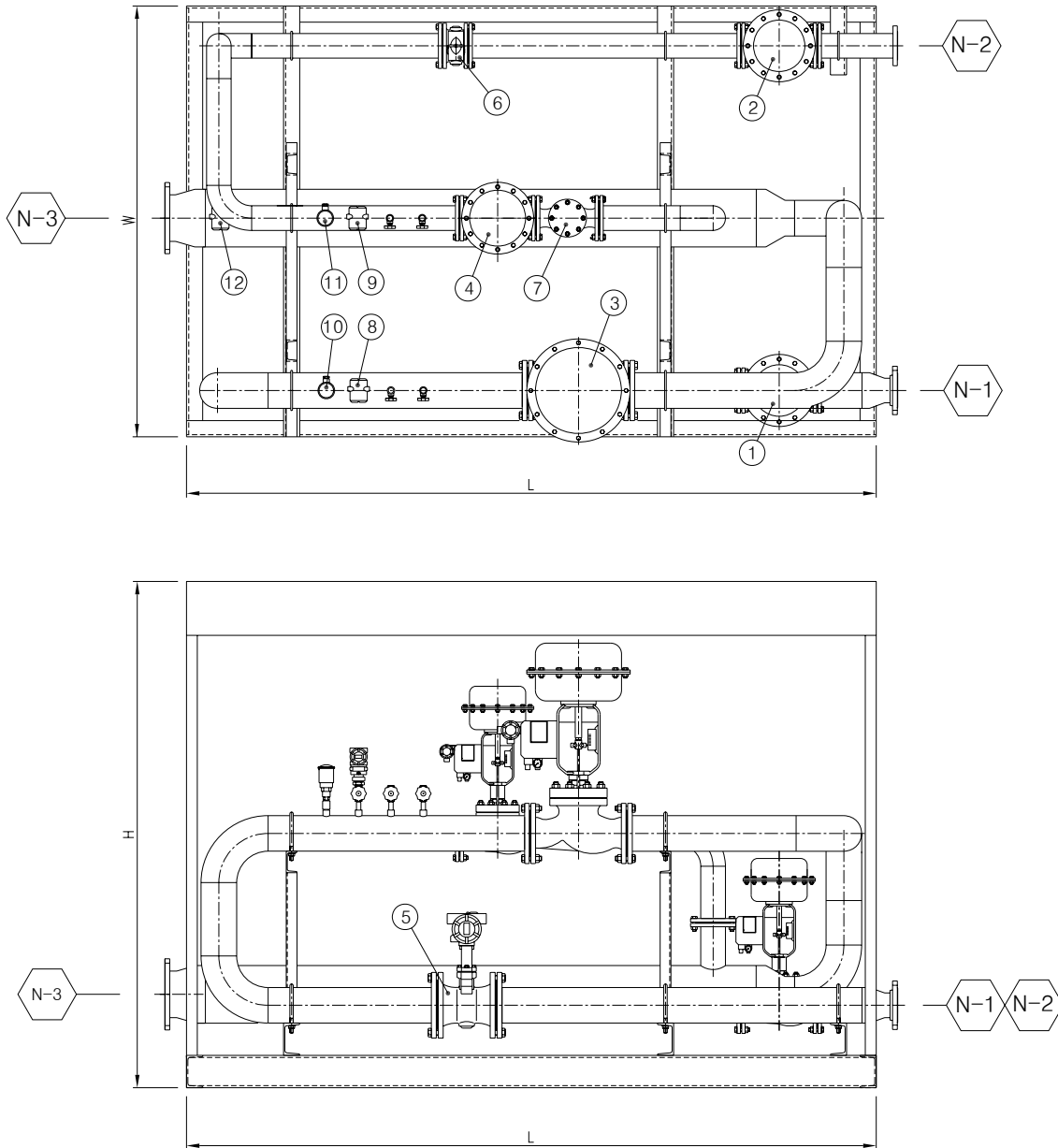
2) Composition of Control Board

Equipment Name	Maker	Remark
Rate controller	YOKOGAWA	JAPAN
Temperature pressure correction device	YOKOGAWA	JAPAN
Pressure, temperature and flux indicator	YOKOGAWA	JAPAN
Flux controller	YOKOGAWA	JAPAN
Alarm device	-	KOREA
Emergent interrupter	-	KOREA
Outer box	JINU DEV	KOREA

3. Typical System Configuration(P&ID)



4. Drawing, Dimension



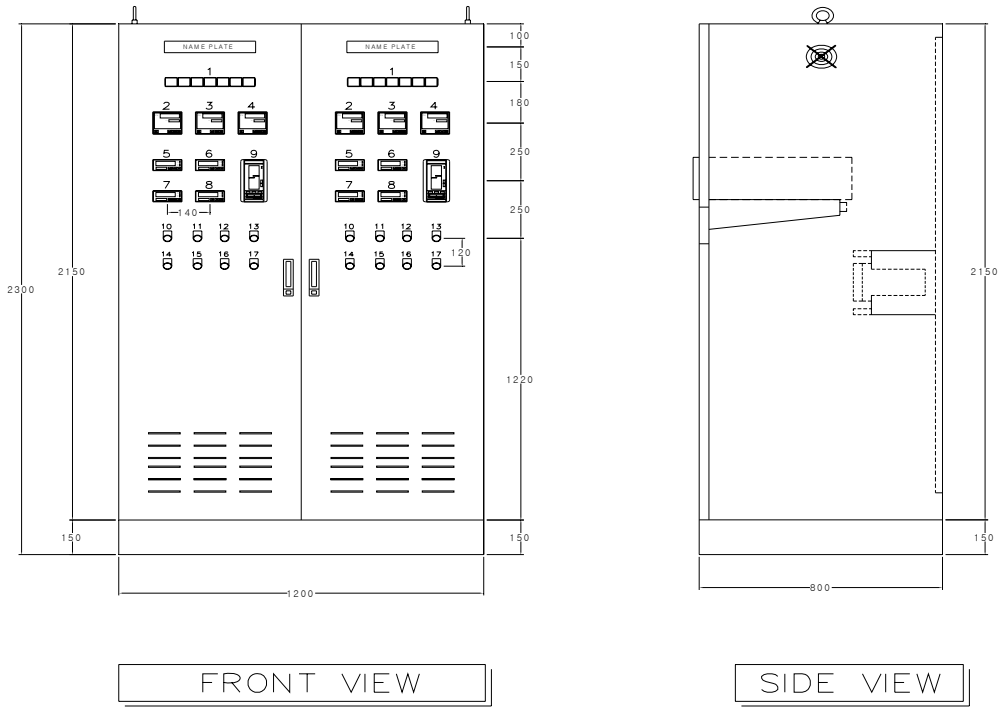
NO.	DESCRIPTION	SIZE	Q'TY	REMARK
1	PRESSURE CONTROL VALVE FOR LPG VAPOR			
2	PRESSURE CONTROL VALVE FOR COMP' AIR	10K RF	1	
3	FLOW CONTROL VALVE FOR LPG VAPOR	10K RF	1	
4	FLOW CONTROL VALVE FOR COMP' AIR	10K RF	1	
5	FLOWTRANSMITTER FOR LPG VAPOR		1	
6	FLOWTRANSMITTER FOR COMP' AIR		1	
7	CHECK VALVE		1	
8	PRESSURE TRANSMITTER FOR LPG VAPOR		1	
9	PRESSURE TRANSMITTER FOR COMP' AIR		1	
10	TEMPERATURE TRANSMITTER FOR LPG VAPOR		1	
11	TEMPERATURE TRANSMITTER FOR COMP' AIR		1	
12	PRESSURE TRANSMITTER FOR MIXED GAS		1	

NOZZLE SCHEDULE

MARK	SIZE	Q'TY	FLANGE			SERVICE
			RATING	TYPE	FACE	
N-1	-	1	KS 20K	SO	RF	LPG VAPOR INLET
N-2	-	1	KS 10K	SO	RF	COMP' AIR INLET
N-3	-	1	KS 10K	SO	RF	MIXED GAS OUTLET

DIMENSIONS & CONNENCTION SIZE

MODEL	DIMENSINS (MM)			FLANGE CONNECTION SIZE (KS)		
	W	L	H	N-1	N-2	N-3
JHM-15	800	1400	1300	20K 20A	10K 20A	10K 40A
JHM-25	900	1600	1500	20K 40A	10K 40A	10K 65A
JHM-40	1100	2000	1800	20K 50A	10K 50A	10K 80A
JHM-80	CONSULT FACTORY FOR JHM-80 AND HIGHER					



NO.	DESCRIPTION	SPEC	Q'TY
1	ALARM STOP		2
2	LPG PRESSURE CONTROLLER		2
3	AIR PRESSURE CONTROLLER		2
4	MIXED GAS PRESSURE CONTROLLER		2
5	LPG TEMP' INDICATOR		2
6	LPG FLOW INDICATOR		2
7	AIR TEMP' INDICATOR		2
8	AIR FLOW INDICATOR		2
9	AIR FLOW CONTROLLER		2
10	SLELCT S/W FOR POWER ON/OFF		2
11	P.B.L FOR BUZZER STOP		2
12	BUZZER		2
13	EMERGENCY SWITCH		2
14	SLELCT S/W FOR COMP' RUN/STOP		2
15	COMP' RUN LAMP		2
16	COMP' STOP LAMP		2
17	COMP' TRIP LAMP		2
18	SDBT & SPLR		2

5. Specifications

SPECIFICATIONS	JHM-15	JHM-25	JHM-40	JHM-80 AND HIGHER
Max. Capacity at 0.05MPa Nm ³ /h	96	298	712	consult factory
Max. Capacity at 0.1MPa Nm ³ /h	192	594	1416	consult factory
Max. Capacity at 0.2MPa Nm ³ /h	286	888	2120	consult factory
Max. Capacity at 0.4MPa Nm ³ /h	478	1478	3528	consult factory
Max. Capacity at 0.5MPa Nm ³ /h	668	2068	4936	consult factory
Safety device	1. LPG Vapor, Compressed Air – Interrupted in case the pressure is lowered. 2. LPG Vapor, Compressed Air – Alarmed in case the pressure is increased. 3. Installation of Air Line Check valve 4. Installation of Emergency Stop Switch			consult factory
Control board indicator	1. Pressure for LPG Vapor, Compressed Air 2. Temperature for LPG Vapor, Compressed Air 3. Flow for LPG Vapor, Compressed Air 4. Pressure for Mixed Gas 5. Alarm Indication 6. Mixer ON-OFF			consult factory
LPG Vapor Supply Connection	20A 20K SORF	40A 20K SORF	50A 20K SORF	consult factory
Compressed Air Supply Connection	20A 10K SORF	40A 10K SORF	50A 10K SORF	
Mixed Gas Outlet Connection	40A 10K SORF	65A 10K SORF	80A 10K SORF	consult factory
Electric Requirement	AC110V 50Hz 3A Single Phase or AC220V 50Hz 3A Single Phase			consult factory
Dimension (L * W * H mm)	1400*800*1300	1600*900*1500	2000*1100*1800	consult factory
Weight(kg)	800	1000	1150	consult factory